

# POUNDBURY

DORCHESTER



CGI shows a typical street scene at Dukes Parade

Plot 271

4 bedroom semi-detached home  
2067 sq ft



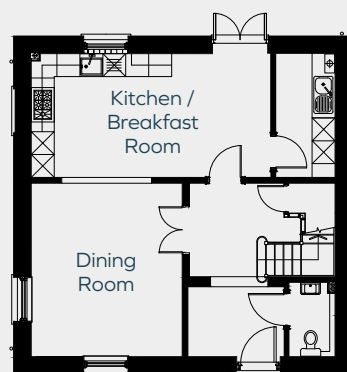
# Plot 271

4 bedroom  
semi-detached home  
2067 sq ft

- Spacious dual aspect living room
- Fully integrated kitchen / breakfast room
- Separate dining room
- Cloakroom
- Utility room
- En suite to master and bedroom 2
- Dressing room to master bedroom
- Balcony views over the Great Field
- Room over double garage
- Enclosed rear garden

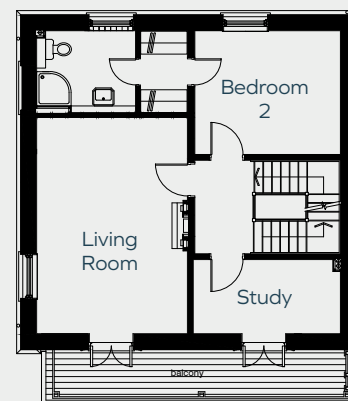
## POUNDBURY — DORCHESTER —

Ground Floor



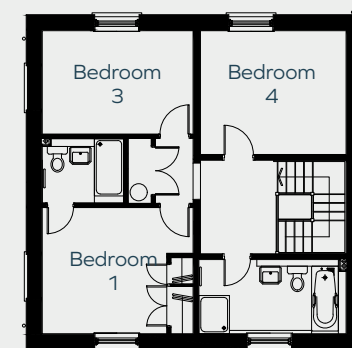
Kitchen / Breakfast Room 6.3m x 3.3m  
Dining Room 4.6m x 4.0m  
Utility Room 3.3m x 1.6m

First Floor



Living Room 5.7m x 4.0m  
Bedroom One 3.8m x 3.3m  
Study 3.9m x 2.0m

Second Floor



Bedroom Two 4.0m x 3.3m  
Bedroom Three 3.8m x 3.3m  
Bedroom Four 4.0m x 2.7m

Plot floor plans are provided to indicate proposed floor layout for each home. Room measurements are accurate within + or - 50mm, however it is not recommended that these measurements are used for flooring installation, or such like, as plots can sometimes vary.



Raising Standards. Protecting Homeowners



www.consumercode.co.uk

01202 623420  
morrishomes.co.uk

