

90 years of
miller
homes



**Poppy Gardens
Brough with St Giles**

millerhomes

the place to be

- 04 Living in Brough with St Giles
- 08 Welcome Home
- 10 Plot Information
- 12 Floorplans
- 36 The Miller Difference
- 40 Useful Contacts
- 42 How to Find Us

A new home. The start of a whole new chapter for you and your family. And for us, the part of our job where bricks and mortar becomes a place filled with activity and dreams and fun and love. We put a huge amount of care into the houses we build, but the story's not finished until we match them up with the right people. So, once you've chosen a Miller home, we'll do everything we can to make the rest of the process easy, even enjoyable. From the moment you make your decision until you've settled happily in, we'll be there to help.



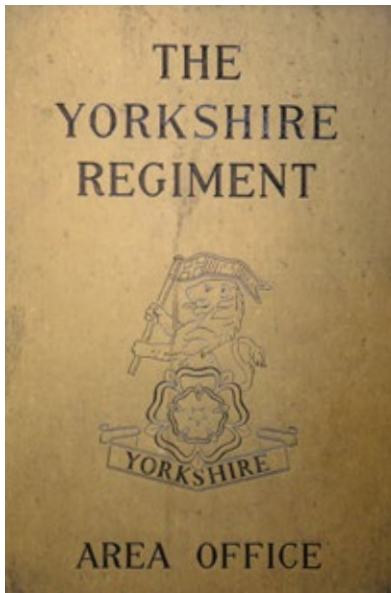
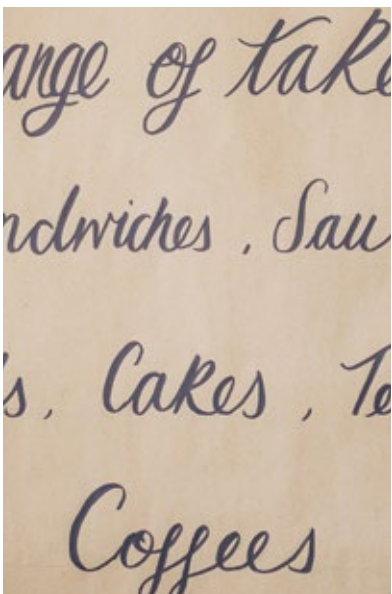
Living in Brough with St Giles

Quality of life is about the details of everyday living. From the little things, like knowing the nearest place to pick up a pint of milk, to more important matters like finding the right school or having a health centre nearby, you need to know that the community you're moving to will support you and your family, as well as being a pleasant place to live. So here's some useful information about the area around Poppy Gardens.



Less than a mile from the A1(M), Poppy Gardens is within half an hour's drive of Barnard Castle and Darlington. Durham and Middlesbrough can be reached in around 35 minutes, and Newcastle upon Tyne and Leeds are around an hour's drive away. A half-hourly bus service runs from Colburn to Darlington, taking just over half an hour to reach Richmond and 70 minutes to arrive in Darlington. A few services carry on to Catterick Racecourse, passing the development.

Five minutes' walk from Poppy Gardens there is a large Lidl supermarket. The Broadway shopping precinct, half a mile away, includes a pharmacy, a Co-op, a post office, hairdressers, a takeaway and a library. Tesco, Aldi and Iceland supermarkets, as well as sports and fashion outlets, can be found in and around Princes Gate Shopping Centre, two miles away. Nearby Richmond is a picturesque, historic market town where the wide selection of shops, cafés and pubs, from high street chains and supermarkets to a Victorian market hall, are set around a beautiful, cobbled Market Place in the shadow of the ancient castle.



Welcome home

On the edge of Brough with St Giles, in beautiful countryside close to the Yorkshire Dales, this inviting selection of energy efficient two, three and four bedroom homes set around a green play area brings an attractive new neighbourhood into a welcoming semi-rural community. Just a few minutes' drive from the A1(M), with good supermarkets, local shops and services nearby, it presents a rare balance of convenience and open, peaceful surroundings.

Welcome to Poppy Gardens...

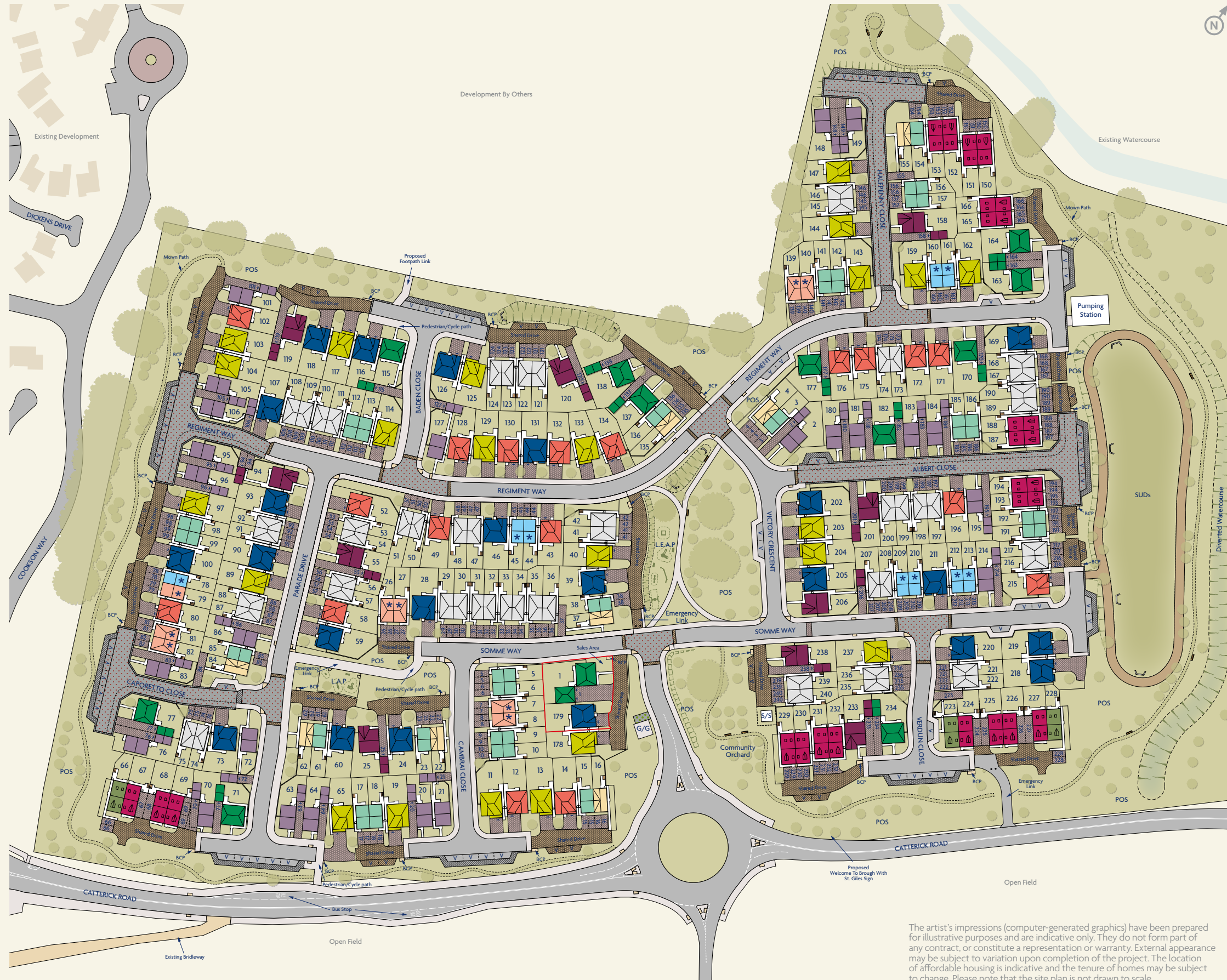
The artist's impressions (computer-generated graphics) have been prepared for illustrative purposes and are indicative only. They do not form part of any contract, or constitute a representation or warranty. External appearance may be subject to variation upon completion of the project.



Plot Information

- Newmont**
See Page 12
- Washington**
See Page 14
- Ingleton**
See Page 16
- Wilton**
See Page 18
- Whitton**
See Page 20
- Neighton**
See Page 22
- Leighton**
See Page 24
- Tollwood**
See Page 26
- Skywood**
See Page 28
- Portwood**
See Page 30
- Kirkwood**
See Page 32
- Norwood**
See Page 34
- Affordable Homes**

- Gas Governor G/G
- Electrical Sub-Station S/S
- Visitor Parking V
- Bin Collection Point BCP
- Sustainable Urban Drainage SUDS
- Local Equipped Area of Play LEAP
- Local Area of Play LAP
- First Home *
(70% open market value)



The artist's impressions (computer-generated graphics) have been prepared for illustrative purposes and are indicative only. They do not form part of any contract, or constitute a representation or warranty. External appearance may be subject to variation upon completion of the project. The location of affordable housing is indicative and the tenure of homes may be subject to change. Please note that the site plan is not drawn to scale.

Newmont

Overview
 A comfortable lounge leads through to a stylish, ergonomic kitchen where french doors introduce a light, open ambience to the dining area. A downstairs WC complements the family bathroom, and one of the two bedrooms features an en-suite shower room and a useful built-in cupboard.

- Ground Floor**
 Lounge
 3.08m x 4.04m
 10'1" x 13'3"
- Kitchen/Dining
 4.03m x 3.00m
 13'3" x 9'10"
- WC
 1.60m x 1.11m
 5'3" x 3'8"
- First Floor**
 Principal Bedroom
 4.03m x 3.19m
 13'3" x 10'6"
- En-Suite
 1.51m x 2.21m
 5'0" x 7'3"
- Bedroom 2
 4.03m x 2.49m
 13'3" x 8'2"
- Bathroom
 1.70m x 1.95m
 5'7" x 6'5"

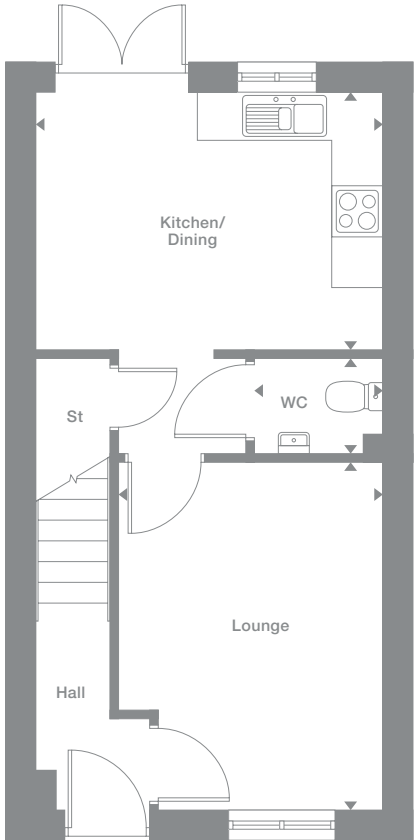
Floor Space
 725 sq ft

Elevational style and materials may vary depending on plot location. Please see Development Sales Manager for details

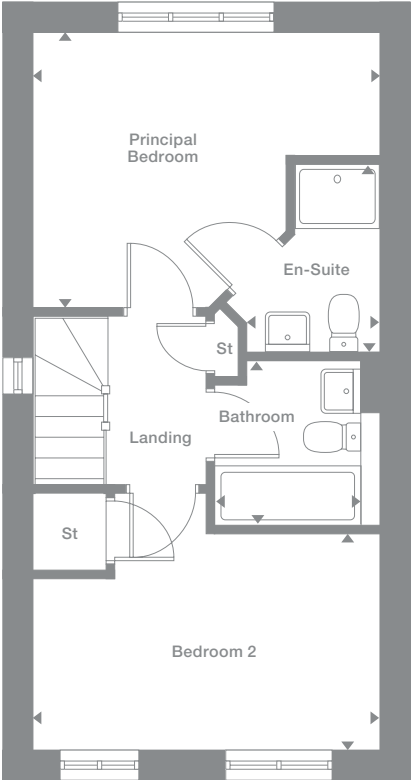
Plots may be a mirror image of the floor plans. Please see Development Sales Manager for details



Ground Floor



First Floor



Photography represents typical Miller Homes' interiors and exteriors. All plans in this brochure are not drawn to scale and are for illustrative purposes only. Consequently, they do not form part of any contract. Room layouts are provisional and may be subject to alteration. Please refer to the 'Important Notice' section at the back of this brochure for more information.

Washington

Overview

With its ergonomic kitchen, and french doors adding flexibility to the inviting living and dining room, this is a home ready for lively entertaining. It includes a downstairs WC, a family bathroom and three bedrooms, one of them en-suite with a convenient built in cupboard.

Ground Floor

Living
4.47m x 3.01m
14'8" x 9'11"

Kitchen
2.29m x 3.17m
7'6" x 10'5"

Dining
3.46m x 2.06m
11'5" x 6'9"

WC
0.94m x 2.02m
3'1" x 6'8"

First Floor

Principal Bedroom
3.06m x 3.21m
10'1" x 10'6"

En-Suite
1.18m x 2.02m
3'10" x 6'8"

Bedroom 2
2.42m x 2.95m
8'0" x 9'8"

Bedroom 3
1.95m x 2.11m
6'5" x 6'11"

Bathroom
2.20m x 1.99m
7'3" x 6'6"

Floor Space

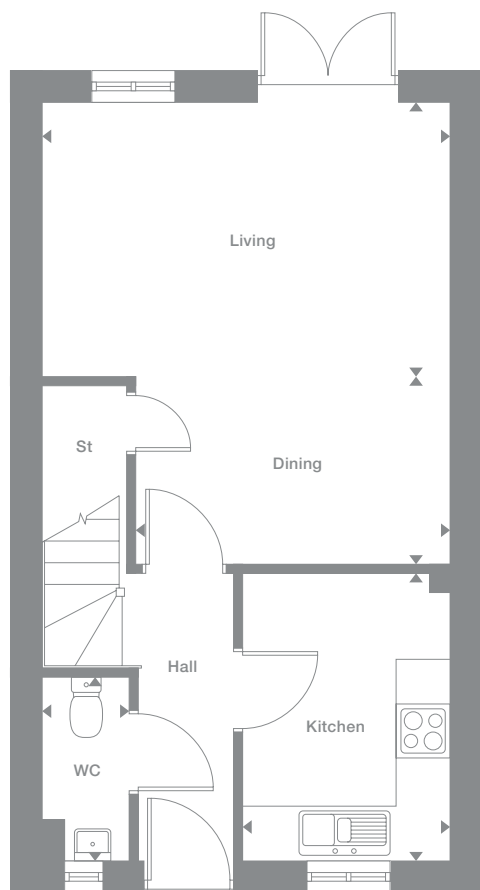
806 sq ft

Elevational style and materials may vary depending on plot location. Please see Development Sales Manager for details

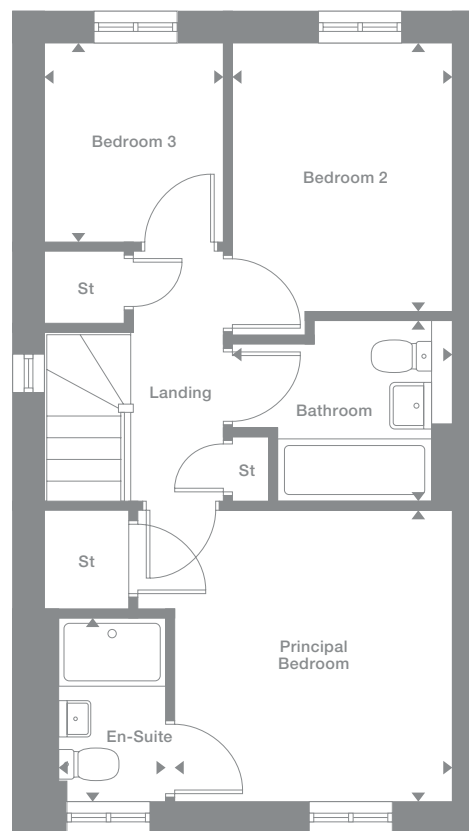
Plots may be a mirror image of the floor plans. Please see Development Sales Manager for details



Ground Floor



First Floor



Photography represents typical Miller Homes' interiors and exteriors. All plans in this brochure are not drawn to scale and are for illustrative purposes only. Consequently, they do not form part of any contract. Room layouts are provisional and may be subject to alteration. Please refer to the 'Important Notices' section at the back of this brochure for more information.

Overview

Complementing a bright, comfortable lounge, french doors transform the kitchen into an airy, adaptable space. A separate laundry adjoins the downstairs WC, and the family bathroom shares the first floor with three bedrooms, including an en-suite principal bedroom with built-in storage space.

Ground Floor

Lounge
3.53m x 4.45m
11'7" x 14'7"

Kitchen/Dining
3.27m x 3.80m
10'9" x 12'6"

Laundry
1.11m x 1.92m
3'8" x 6'4"

WC
1.11m x 1.78m
3'8" x 5'10"

First Floor

Principal Bedroom
2.98m x 3.23m
9'9" x 10'7"

En-Suite
1.18m x 1.98m
3'10" x 6'6"

Bedroom 2
2.37m x 3.22m
7'10" x 10'7"

Bedroom 3
2.00m x 2.14m
6'7" x 7'0"

Bathroom
2.37m x 1.70m
7'10" x 5'7"

Floor Space

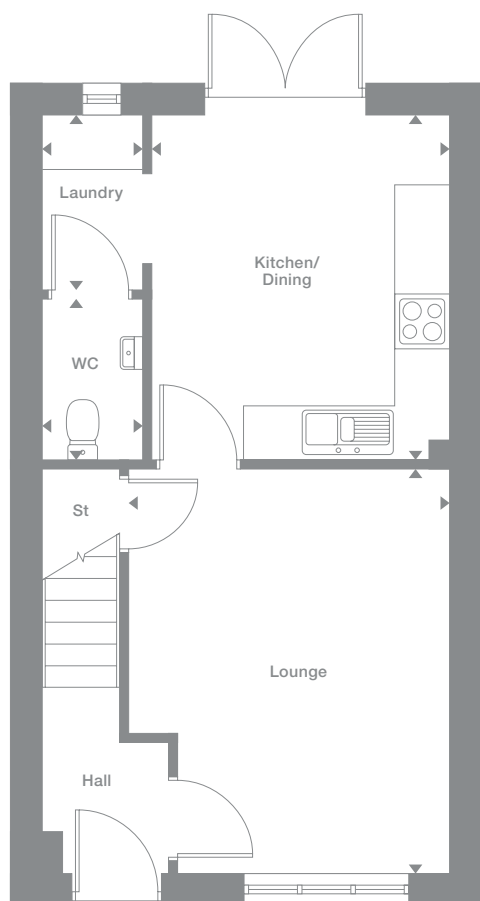
806 sq ft

Elevational style and materials may vary depending on plot location. Please see Development Sales Manager for details

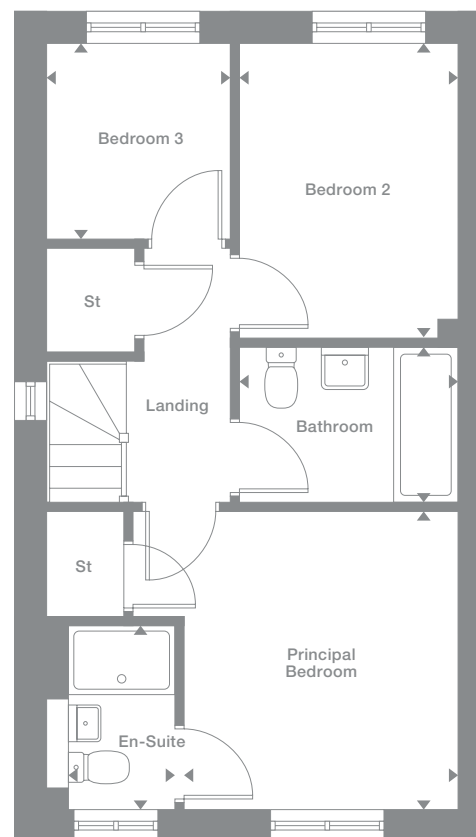
Plots may be a mirror image of the floor plans. Please see Development Sales Manager for details



Ground Floor



First Floor



Photography represents typical Miller Homes' interiors and exteriors. All plans in this brochure are not drawn to scale and are for illustrative purposes only. Consequently, they do not form part of any contract. Room layouts are provisional and may be subject to alteration. Please refer to the 'Important Notices' section at the back of this brochure for more information.

Wilton

Overview

With dual aspect windows in the lounge and the kitchen, and french doors in the dining area, this is a delightfully light, airy home. Upstairs, in addition to the family bathroom there are three bedrooms, one of them en-suite and another with dual aspect outlooks.

Ground Floor

Lounge
4.65m x 2.98m
15'3" x 9'9"

Kitchen
2.88m x 3.42m
9'6" x 11'3"

Dining
1.76m x 2.32m
5'10" x 7'7"

WC
1.67m x 0.99m
5'6" x 3'3"

First Floor

Principal Bedroom
3.32m x 2.98m
10'11" x 9'9"

En-Suite
1.00m x 2.75m
3'4" x 9'0"

Bedroom 2
2.53m x 3.42m
8'4" x 11'3"

Bedroom 3
2.02m x 3.42m
6'8" x 11'3"

Bathroom
1.70m x 1.96m
5'7" x 6'5"

Floor Space

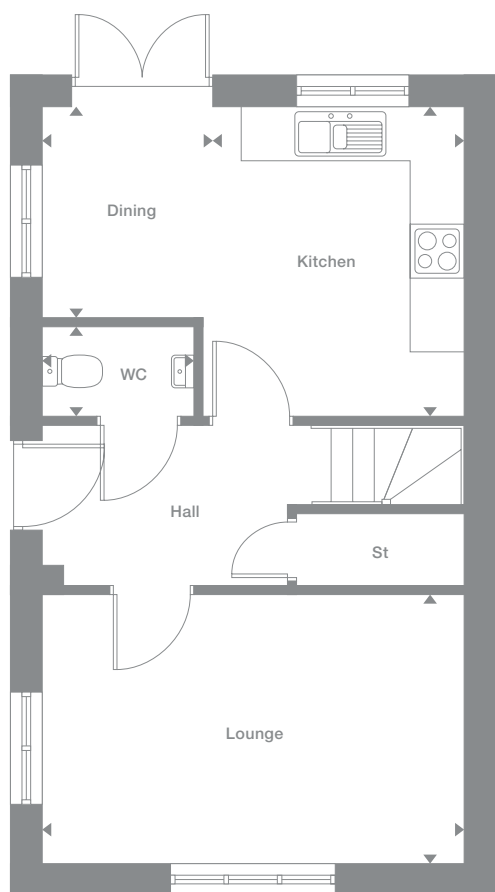
837 sq ft

Elevational style and materials may vary depending on plot location. Please see Development Sales Manager for details

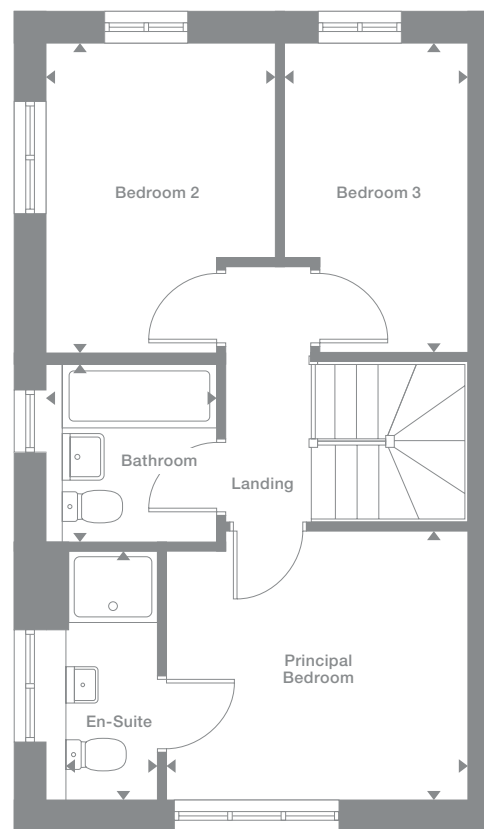
Plots may be a mirror image of the floor plans. Please see Development Sales Manager for details



Ground Floor



First Floor



Photography represents typical Miller Homes' interiors and exteriors. All plans in this brochure are not drawn to scale and are for illustrative purposes only. Consequently, they do not form part of any contract. Room layouts are provisional and may be subject to alteration. Please refer to the 'Important Notices' section at the back of this brochure for more information.

Overview

The bright lounge shares the ground floor with a downstairs WC and a bright kitchen where french doors add special appeal to the dining area. The family bathroom shares the first floor with three bedrooms, including a superb en-suite principal bedroom with a walk-in storage.

Ground Floor

Lounge
2.96m x 4.73m
9'9" x 15'6"

Kitchen
2.86m x 3.51m
9'5" x 11'6"

Dining
2.37m x 3.51m
7'9" x 11'6"

WC
1.03m x 1.63m
3'5" x 5'4"

First Floor

Principal Bedroom
3.21m x 3.69m
10'7" x 12'1"

En-Suite
1.92m x 1.95m
6'4" x 6'5"

Bedroom 2
2.98m x 2.46m
9'10" x 8'1"

Bedroom 3
2.15m x 3.51m
7'1" x 11'6"

Bathroom
1.70m x 2.04m
5'7" x 6'8"

Floor Space

947 sq ft

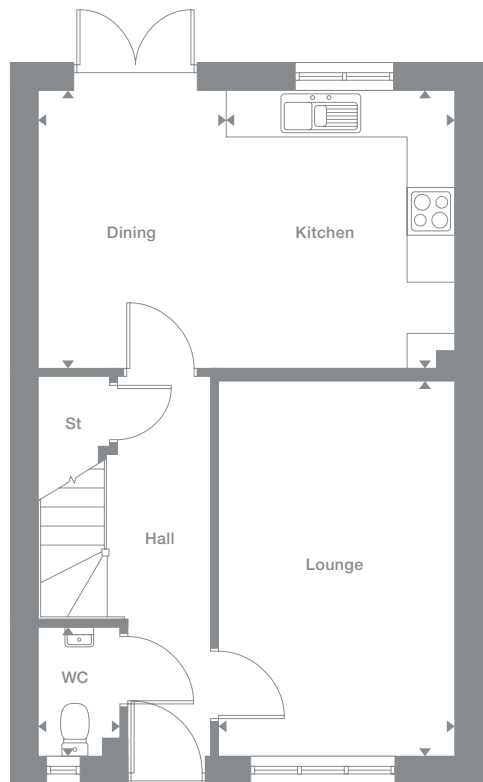
Elevational style and materials may vary depending on plot location. Please see Development Sales Manager for details

† Window only applicable to some plots. Please see Development Sales Manager for details

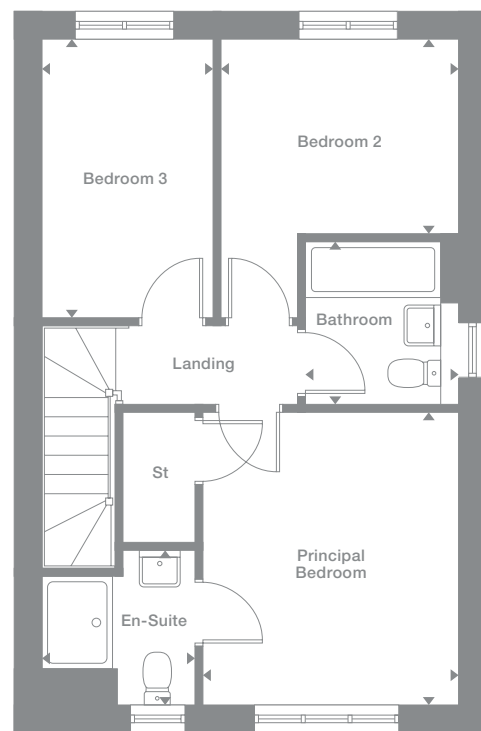
Plots may be a mirror image of the floor plans. Please see Development Sales Manager for details



Ground Floor



First Floor



Photography represents typical Miller Homes' interiors and exteriors. All plans in this brochure are not drawn to scale and are for illustrative purposes only. Consequently, they do not form part of any contract. Room layouts are provisional and may be subject to alteration. Please refer to the 'Important Notices' section at the back of this brochure for more information.

Neighton

Overview

The long hallway leads past the principal bedroom and family bathroom into a light, airy open-plan living/kitchen area incorporating french doors, creating a wonderfully adaptable space for relaxed socialising. Upstairs, two of the three bedrooms share a dual-access en-suite shower room, and one has a charming dormer window.

Ground Floor

Living/Kitchen/Dining
4.36m x 4.93m
14'4" x 16'2"

Principal Bedroom
4.04m x 3.32m
13'3" x 10'11"

Bathroom
2.60m x 2.21m
8'6" x 7'3"

First Floor

Bedroom 2
2.99m x 4.93m
9'8" x 16'2"

Bedroom 3
2.89m x 4.93m
9'5" x 16'2"

En-Suite
1.50m x 2.27m
4'9" x 7'4"

Floor Space

930 sq ft

Elevational style and materials may vary depending on plot location. Please see Development Sales Manager for details

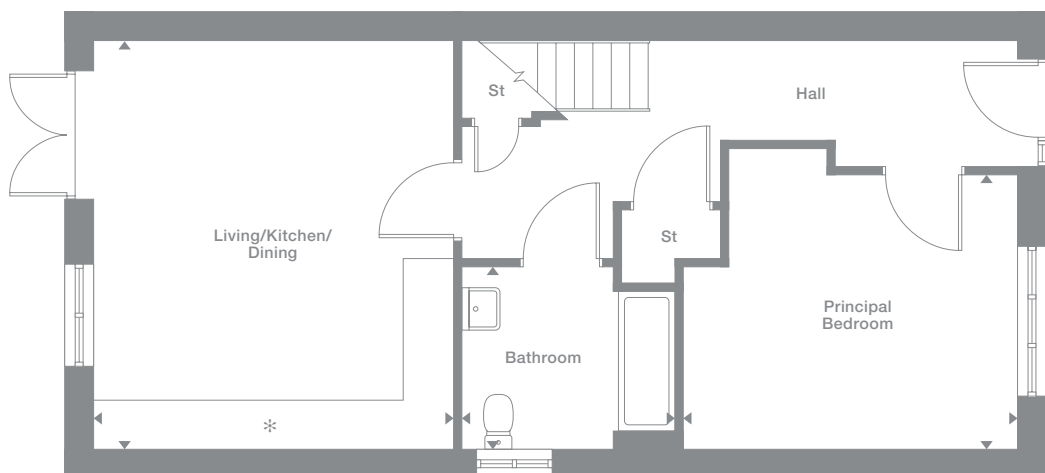
Denotes 1.800m height ceiling line

* Kitchen layout subject to change. Please see Development Sales Manager for details

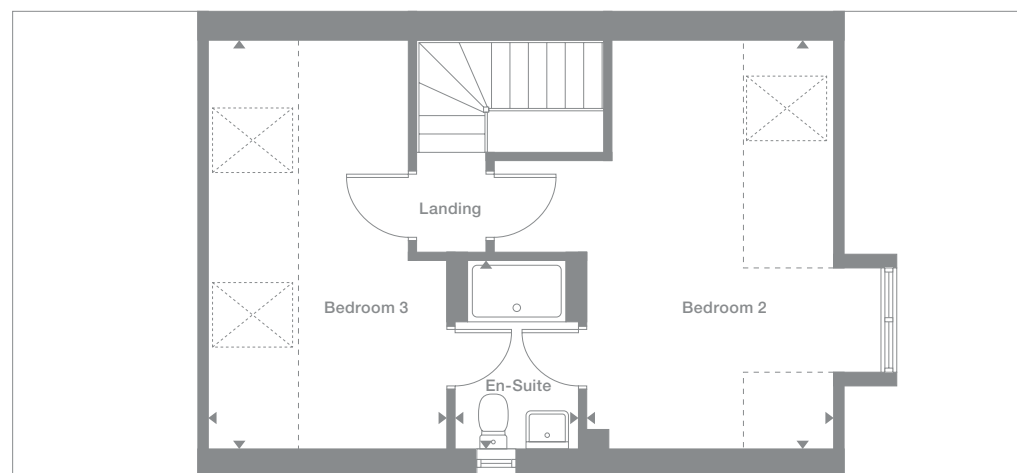
Plots may be a mirror image of the floor plans. Please see Development Sales Manager for details



Ground Floor



First Floor



Photography represents typical Miller Homes' interiors and exteriors. All plans in this brochure are not drawn to scale and are for illustrative purposes only. Consequently, they do not form part of any contract. Room layouts are provisional and may be subject to alteration. Please refer to the 'Important Notice' section at the back of this brochure for more information.

Leighton

Overview

The hallway leads into a light, airy open-plan kitchen and living area incorporating french doors, creating a wonderfully adaptable space for relaxed socialising. The principal bedroom has three windows and is also accessed from the hallway. Upstairs, two of the three bedrooms share a dual-access en-suite shower room, and one has a charming dormer window.

Ground Floor

Living/Kitchen/Dining
4.20m x 4.94m
13'8" x 16'2"

Principal Bedroom
2.96m x 4.94m
9'7" x 16'2"

Bathroom
2.25m x 2.56m
7'4" x 8'4"

First Floor

Bedroom 2
2.99m x 4.94m
9'8" x 16'2"

Bedroom 3
2.89m x 4.94m
9'5" x 16'2"

En-Suite
1.50m x 2.27m
4'9" x 7'4"

Floor Space

930 sq ft

Elevational style and materials may vary depending on plot location. Please see Development Sales Manager for details

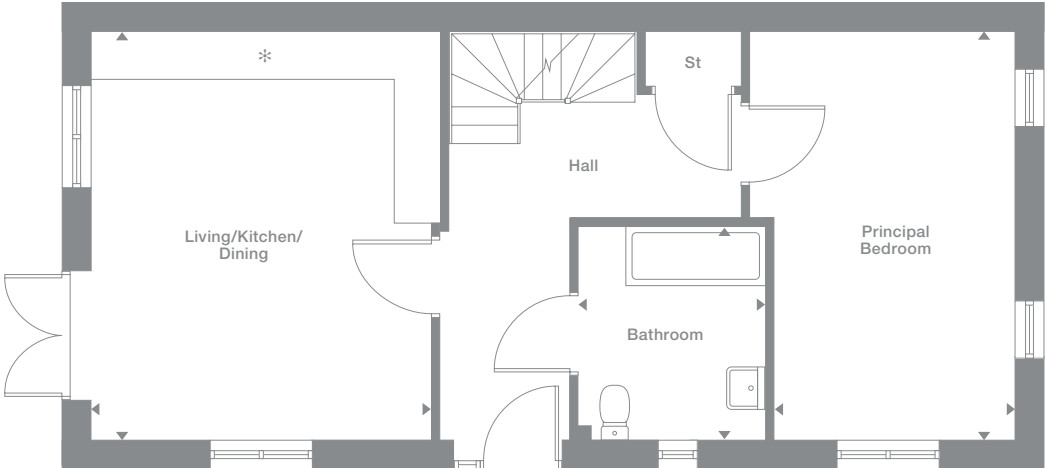
Denotes 1,800m height ceiling line

* Kitchen layout subject to change. Please see Development Sales Manager for details

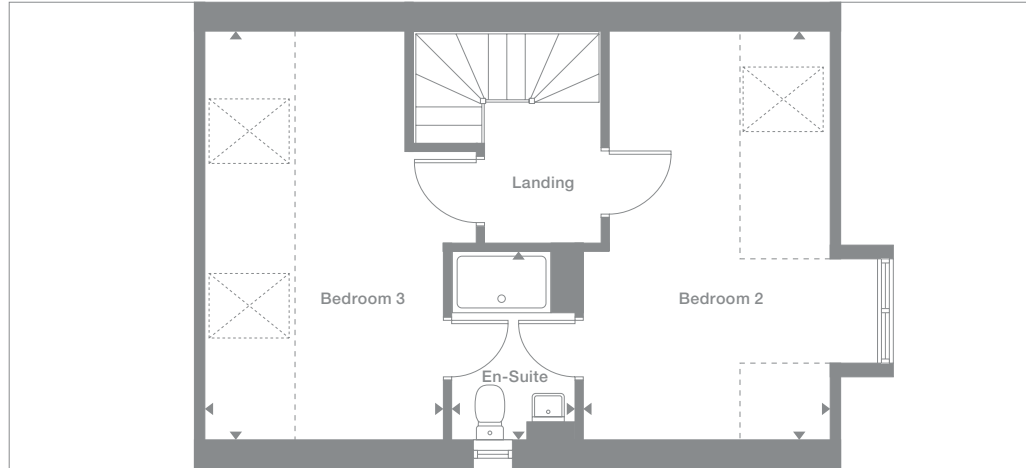
Plots may be a mirror image of the floor plans. Please see Development Sales Manager for details



Ground Floor



First Floor



Photography represents typical Miller Homes' interiors and exteriors. All plans in this brochure are not drawn to scale and are for illustrative purposes only. Consequently, they do not form part of any contract. Room layouts are provisional and may be subject to alteration. Please refer to the 'Important Notice' section at the back of this brochure for more information.

Tollwood

Overview

With a dedicated laundry, and french doors enhancing the dining area, the kitchen provides a bright social hub that perfectly complements the adjoining lounge. The family bathroom joins the four bedrooms on the first floor, and the en-suite principal bedroom features a luxurious dressing area.

Ground Floor

Lounge
3.18m x 4.59m
10'5" x 15'1"

Kitchen/Dining
4.12m x 3.26m
13'7" x 10'8"

Laundry
1.95m x 1.92m
6'5" x 6'4"

WC
1.00m x 1.92m
3'3" x 6'4"

First Floor

Principal Bedroom
4.12m x 2.47m
13'7" x 8'1"

En-Suite
2.04m x 1.18m
6'8" x 3'10"

Dressing
2.04m x 1.65m
6'8" x 5'5"

Bedroom 2
3.05m x 3.69m
10'0" x 12'1"

Bedroom 3
3.11m x 2.41m
10'2" x 7'11"

Bedroom 4
1.92m x 3.54m
6'4" x 11'8"

Bathroom
2.05m x 2.18m
6'9" x 7'2"

Floor Space

1,025 sq ft

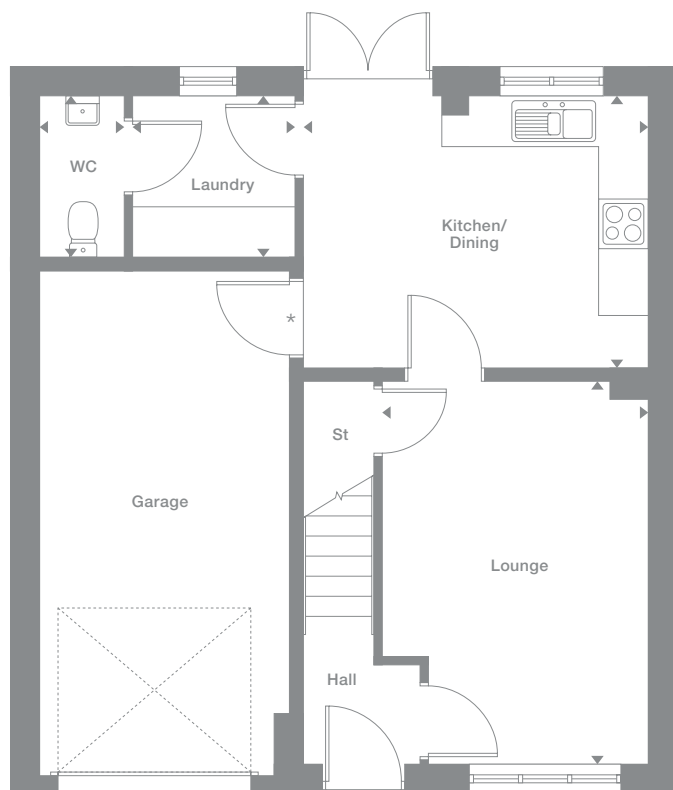
Elevation style and materials may vary depending on plot location. Please see Development Sales Manager for details

* Optional garage door

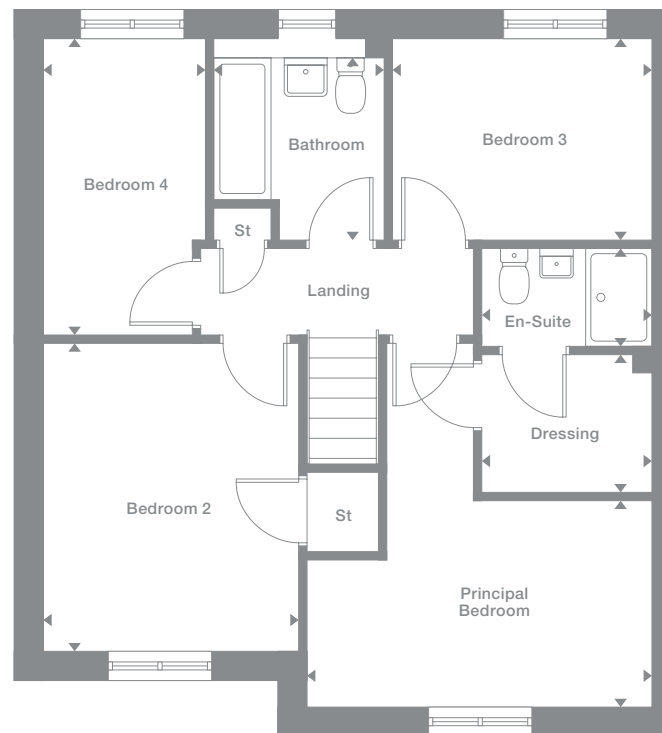
Plots may be a mirror image of the floor plans. Please see Development Sales Manager for details



Ground Floor



First Floor



Photography represents typical Miller Homes' interiors and exteriors. All plans in this brochure are not drawn to scale and are for illustrative purposes only. Consequently, they do not form part of any contract. Room layouts are provisional and may be subject to alteration. Please refer to the 'Important Notices' section at the back of this brochure for more information.

Skywood

Overview

The stylish lounge opens on to a bright, inspiring kitchen, a natural hub for family life, with french doors adding an exciting flexibility to the dining area. The dedicated laundry helps separate household management from leisure space, and one of the four bedrooms is en-suite.

Ground Floor

Lounge
3.27m x 4.82m
10'9" x 15'10"

Kitchen
2.95m x 3.26m
9'8" x 10'9"

Laundry
1.60m x 2.09m
5'3" x 6'10"

Dining
2.84m x 3.26m
9'4" x 10'9"

WC
1.60m x 1.07m
5'3" x 3'6"

First Floor

Principal Bedroom
4.27m x 2.88m
14'0" x 9'6"

En-Suite
1.83m x 2.38m
6'0" x 7'10"

Bedroom 2
3.70m x 2.82m
12'2" x 9'3"

Bedroom 3
3.13m x 2.61m
10'3" x 8'7"

Bedroom 4
3.70m x 2.82m
12'2" x 9'3"

Bathroom
1.70m x 2.09m
5'7" x 6'10"

Floor Space

1,144 sq ft

Elevational style and materials may vary depending on plot location. Please see Development Sales Manager for details

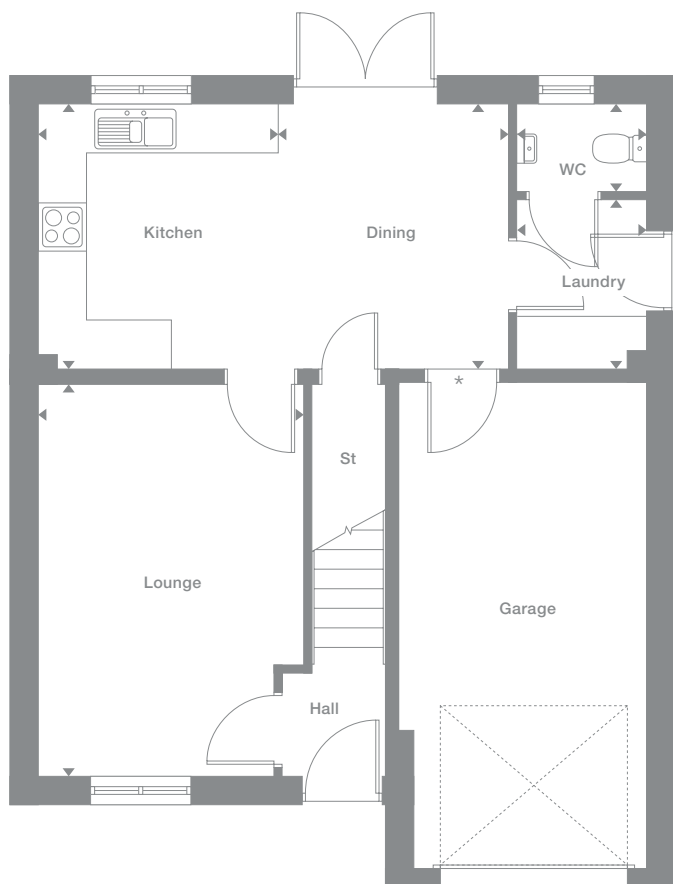
† Window only applicable to some plots. Please see Development Sales Manager for details

* Optional garage door

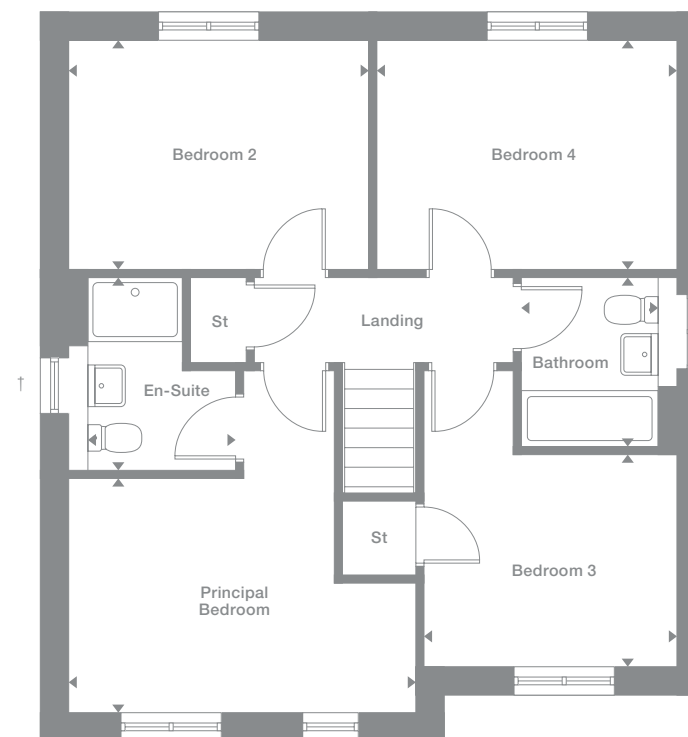
Plots may be a mirror image of the floor plans. Please see Development Sales Manager for details



Ground Floor



First Floor



Photography represents typical Miller Homes' interiors and exteriors. All plans in this brochure are not drawn to scale and are for illustrative purposes only. Consequently, they do not form part of any contract. Room layouts are provisional and may be subject to alteration. Please refer to the 'Important Notice' section at the back of this brochure for more information.

Portwood

Overview

The magnificent dual aspect, L-shaped family room extends into a light-filled dining area opening to the garden, and a stylish, ergonomic galley kitchen with a separate laundry. The bathroom has a separate shower, and the four bedrooms include a principal bedroom with en-suite and dressing room.

Ground Floor

- Lounge**
2.93m x 4.08m
97" x 13'5"
- Kitchen**
3.45m x 2.70m
11'4" x 8'10"
- Laundry**
1.91m x 1.71m
6'4" x 5'7"
- Dining**
3.03m x 4.16m
9'11" x 13'8"
- Family**
3.03m x 2.76m
9'11" x 9'1"
- WC**
1.91m x 0.90m
6'4" x 2'11"

First Floor

- Principal Bedroom**
3.14m x 2.75m
10'4" x 9'0"
- En-Suite**
1.97m x 1.55m
6'6" x 5'1"
- Dressing**
1.85m x 1.97m
6'1" x 6'6"
- Bedroom 2**
2.93m x 3.81m
9'7" x 12'6"
- Bedroom 3**
3.72m x 2.44m
12'3" x 8'0"
- Bedroom 4/Study**
2.15m x 3.02m
7'1" x 9'11"
- Bathroom**
2.05m x 1.69m
6'9" x 5'7"

Floor Space

1,212 sq ft

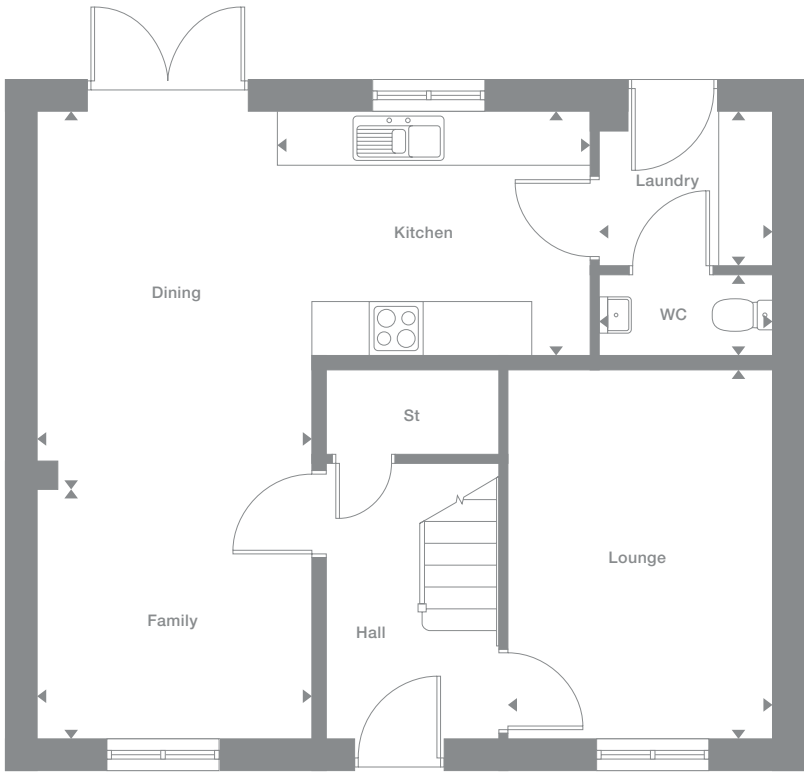
Elevational style and materials may vary depending on plot location. Please see Development Sales Manager for details

❖ Stair bulkhead

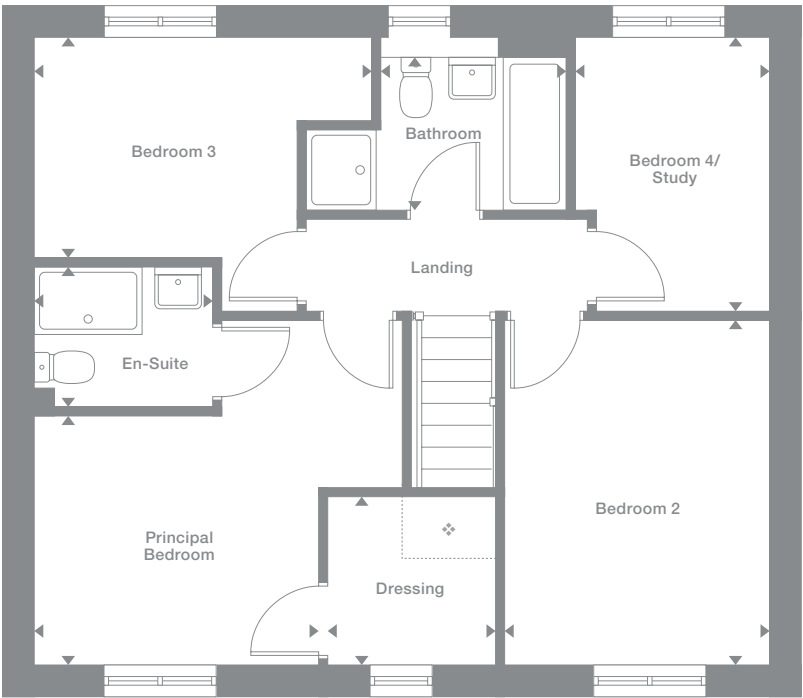
Plots may be a mirror image of the floor plans. Please see Development Sales Manager for details



Ground Floor



First Floor



Photography represents typical Miller Homes' interiors and exteriors. All plans in this brochure are not drawn to scale and are for illustrative purposes only. Consequently, they do not form part of any contract. Room layouts are provisional and may be subject to alteration. Please refer to the 'Important Notices' section at the back of this brochure for more information.

Kirkwood

Overview

Extending the full width of the home, the exciting kitchen, dining and family room presents a perfect setting for everyday life. The lounge incorporates a bay window, the bathroom includes a separate shower and one of the four bedrooms is en-suite with a dressing area.

Ground Floor

- Lounge**
2.95m x 4.43m
9'8" x 14'7"
- Kitchen**
2.86m x 2.68m
9'5" x 8'10"
- Laundry**
1.80m x 1.26m
5'9" x 4'2"
- Dining**
2.16m x 2.68m
7'1" x 8'10"
- Family**
3.14m x 2.36m
10'4" x 7'9"
- WC**
1.44m x 1.26m
4'9" x 4'2"

First Floor

- Principal Bedroom**
4.03m x 2.73m
13'3" x 9'0"
- En-Suite**
2.60m x 1.19m
8'6" x 3'9"
- Dressing**
2.60m x 1.42m
8'6" x 4'8"
- Bedroom 2**
2.95m x 3.91m
9'8" x 12'10"
- Bedroom 3**
3.04m x 2.87m
10'0" x 9'5"
- Bedroom 4**
2.60m x 3.94m
8'7" x 12'11"
- Bathroom**
2.33m x 2.87m
7'8" x 9'5"

Floor Space

1,240 sq ft

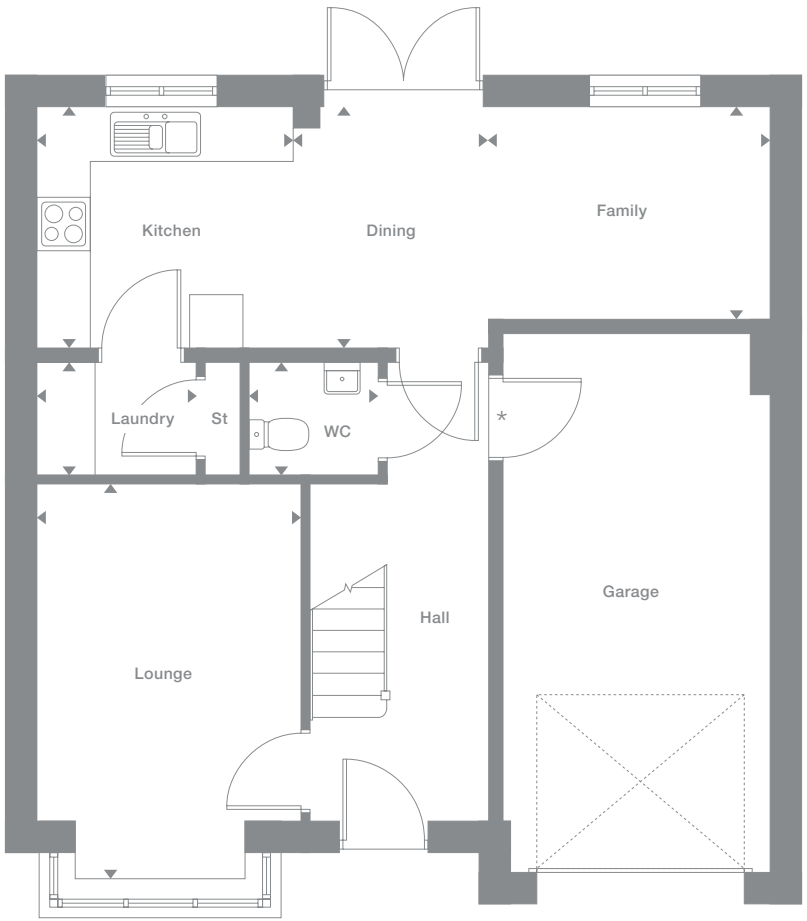
Elevational style and materials may vary depending on plot location. Please see Development Sales Manager for details

* Optional garage door

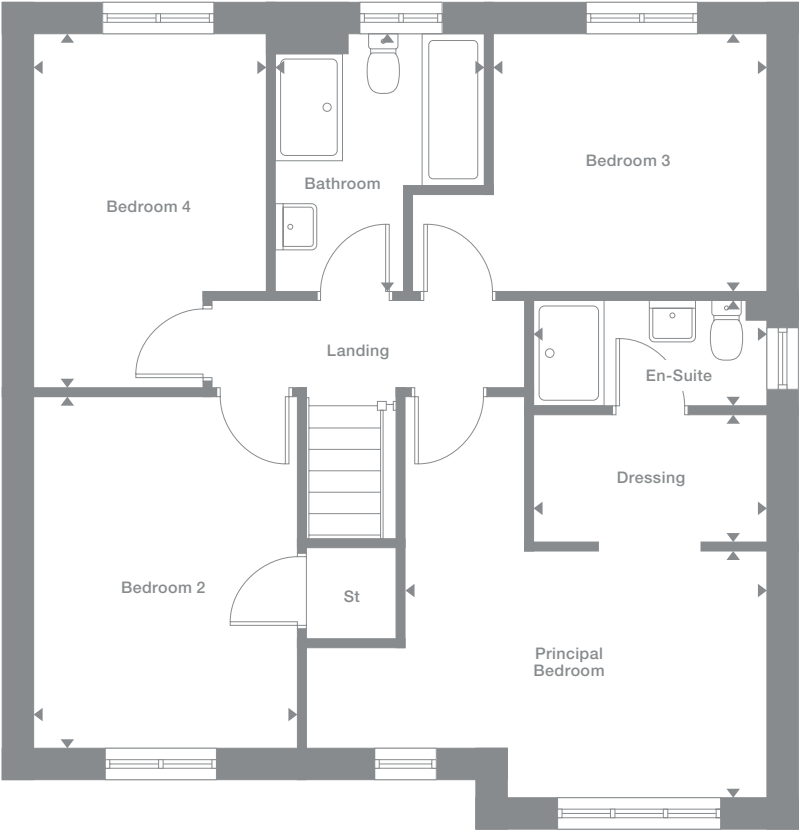
Plots may be a mirror image of the floor plans. Please see Development Sales Manager for details



Ground Floor



First Floor



Photography represents typical Miller Homes' interiors and exteriors. All plans in this brochure are not drawn to scale and are for illustrative purposes only. Consequently, they do not form part of any contract. Room layouts are provisional and may be subject to alteration. Please refer to the 'Important Notices' section at the back of this brochure for more information.

Norwood

Overview

From the laundry that leaves the kitchen and dining room free for enjoying family time to the stylish lounge and practical study, this is a comfortable, adaptable home. A gallery landing leads to four bedrooms, one of them en-suite, and a bathroom with separate shower.

Ground Floor

- Lounge**
3.58m x 4.51m
11'9" x 14'10"
- Kitchen**
3.36m x 2.95m
11'0" x 9'8"
- Laundry**
2.06m x 1.66m
6'9" x 5'5"
- Family/Dining**
3.71m x 3.84m
12'2" x 12'7"
- Study**
2.06m x 1.96m
6'9" x 6'5"
- WC**
2.06m x 1.12m
6'9" x 3'8"

First Floor

- Principal Bedroom**
3.58m x 3.17m
11'9" x 10'5"
- En-Suite**
2.31m x 1.30m
7'7" x 4'3"
- Bedroom 2**
3.65m x 2.73m
12'0" x 9'0"
- Bedroom 3**
3.40m x 3.15m
11'2" x 10'4"
- Bedroom 4**
3.32m x 2.72m
10'11" x 8'11"
- Bathroom**
2.57m x 1.99m
8'5" x 6'6"

Floor Space

1,344 sq ft

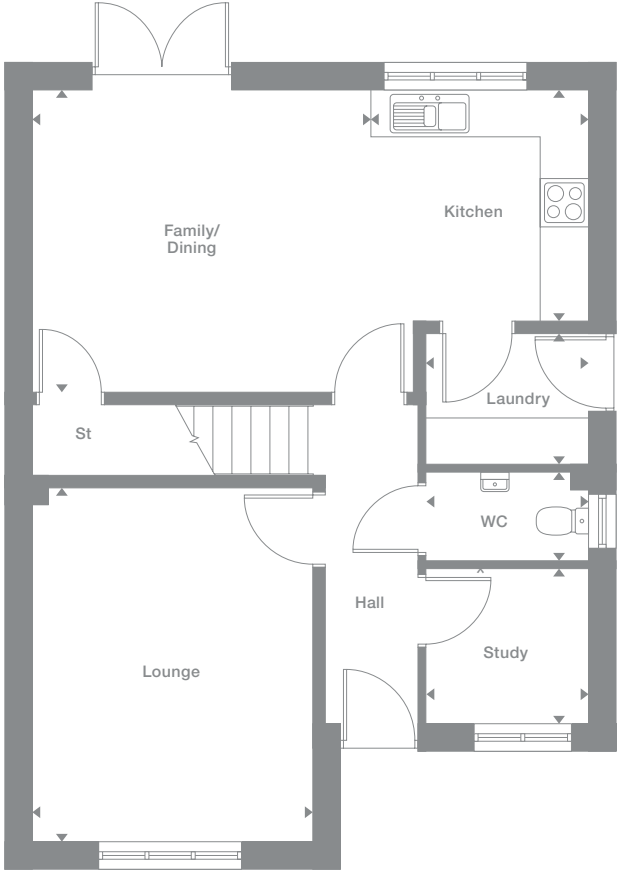
Elevational style and materials may vary depending on plot location. Please see Development Sales Manager for details

† Window only applicable to some plots. Please see Development Sales Manager for details

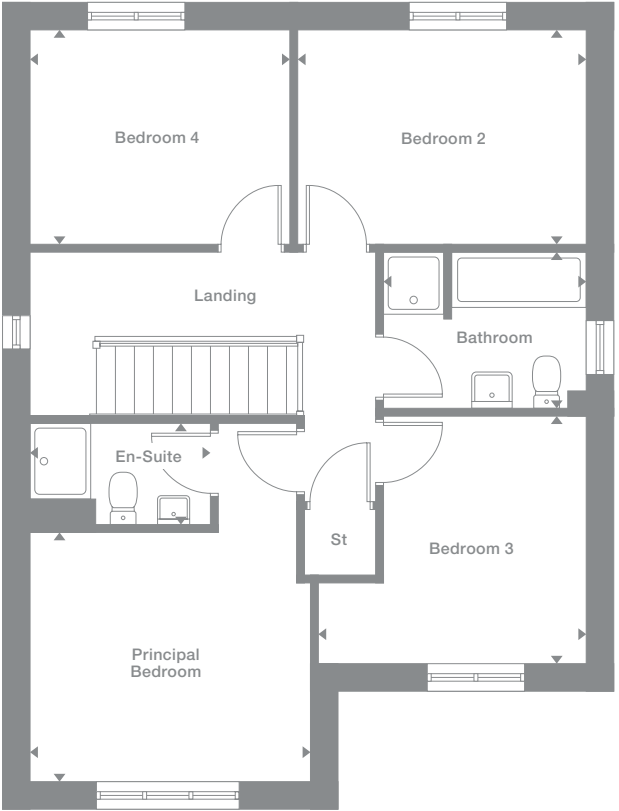
Plots may be a mirror image of the floor plans. Please see Development Sales Manager for details



Ground Floor



First Floor



Photography represents typical Miller Homes' interiors and exteriors. All plans in this brochure are not drawn to scale and are for illustrative purposes only. Consequently, they do not form part of any contract. Room layouts are provisional and may be subject to alteration. Please refer to the 'Important Notice' section at the back of this brochure for more information.

The Miller Difference

The Miller Difference
Every home we build is the start of an adventure. For more than 90 years we've watched people stamp their individual personalities on the homes we build. What we create is your starting point. Our job is to make sure it's the best one possible.

Shaped around you
For more than three generations, we've been listening to our customers. We know what you expect: the highest quality materials, the most skilled workmanship, ready to be shaped around your lifestyle.

Built on trust
Figures and statistics matter. We have, for example, a five star rating for Customer Satisfaction, the best possible, from the Home Builders Federation.

Even more important, though, is the feedback we get from our customers. After we've been with them on the journey from their first enquiry to settling into their new home, well over 90% say they would recommend us. That's the real measure of the trust they place in us.

Helping where we can
You might already have a clear picture of life in your new home. Or it might be a blank canvas. Either way, getting there is an exciting journey of discovery. And we're here to help.

From the first time you contact us, whether by phone, video call or a tour of a show home, we'll be listening carefully. Only you know what you want, but we'll be working with you to achieve it.

And we'll still be on hand, ready to help, long after you move in, quietly sharing your pride and satisfaction.

Pushing up standards
From beautiful locations and superb architectural design to meticulous construction work and exceptional finishes, our expertise is widely acknowledged. Our award-winning developments embrace state-of-the-art technologies and green thinking, but we never lose sight of the importance of craftsmanship. Every step is subject to rigorous Quality Assurance checks, and we reward our highly trained teams for safe and careful practice.

A smooth customer journey
Our award-winning service reflects the same high standards. As we guide you through your choices, decades of experience inform every step. So you can relax and enjoy the journey, knowing you have all the information you need.

With you every step of the way
After meeting your Development Sales Manager, who will help you choose and buy your new home, you'll be introduced to your Site Manager, who will be responsible for every aspect of the building work. They'll both be happy to answer any questions you have.

Fully involved
Your new home will quickly be moulded to your personal choices. So will our service. Once you tell us how you want to keep in touch, whether by phone, text, email, our custom designed app or via our website, that's how we'll keep you regularly updated and informed. You'll be able to access all the records of meetings, and see what happens next.

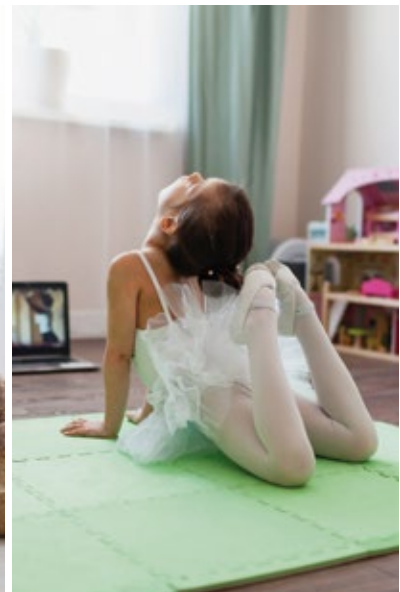
Make it your own
Even before you move in, there's the excitement of planning your interior. Choosing tiles and worktops, making decisions about appliances. We'll help wherever we can. Our Visualiser, for example, can help you make selections online then see them for real in the Sales Centre. Already, it's becoming your own, personal, space.

At a safe time during building, we'll invite you to visit your new home for a Progress Meeting where you can see the craftsmanship and attention to detail for yourself before it's covered up by fittings and finishes.

A place to grow
For us, the mark of success is seeing every home become unique, an individual reflection of the people who live there, and watching it become part of a thriving community.

By creating sustainable homes, in sustainable communities, we're helping to build a sustainable future for everyone. Including ourselves.

your home
your way...

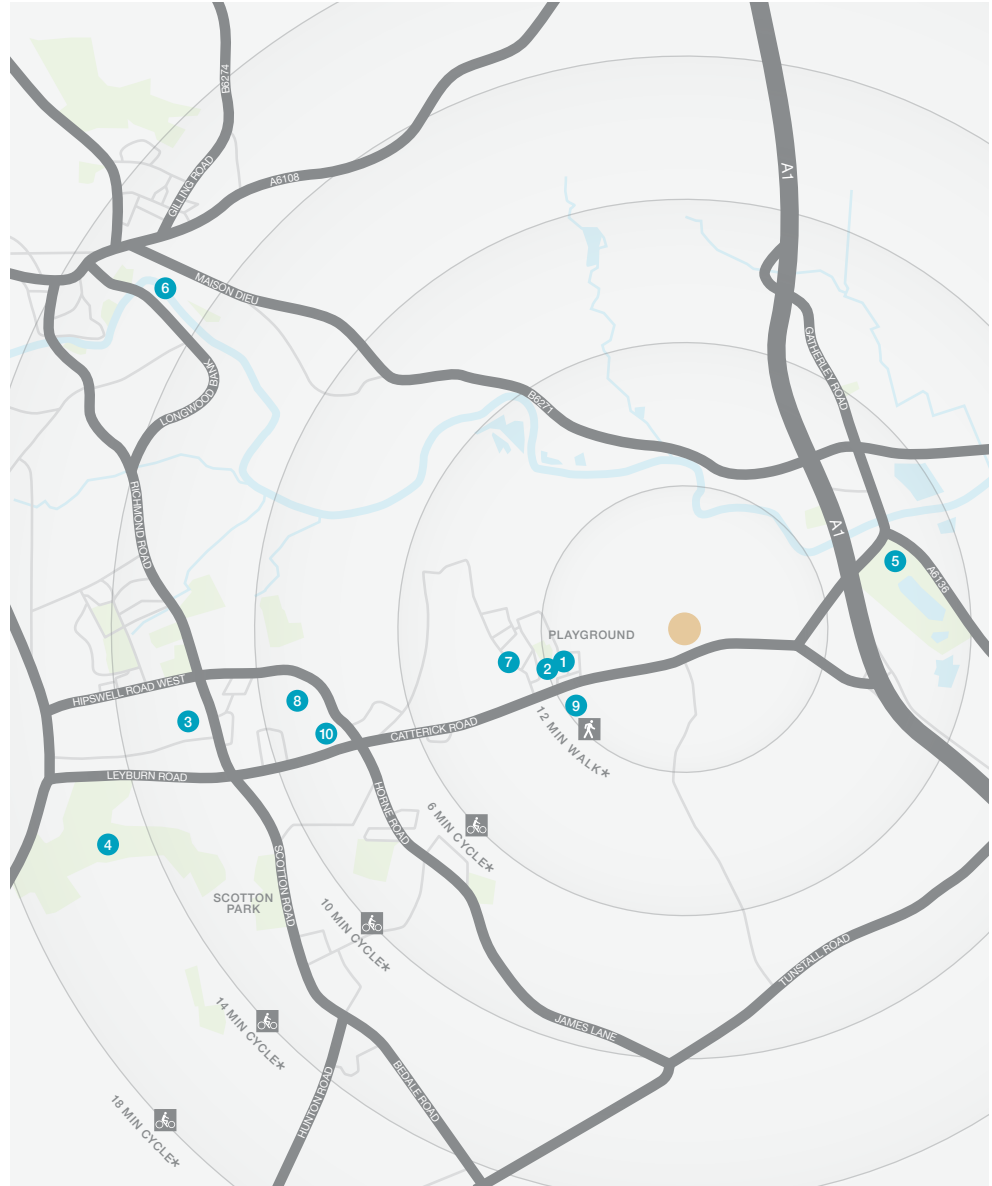


The area offers an eclectic choice of leisure activities, ranging from fine dining and race days at Catterick Racecourse to angling at Catterick Fishing Complex on the River Swale or football training at Colburn Community Sports Centre. Catterick Leisure Centre, next to Princes Gate, has a well-equipped gym and three swimming pools, and Catterick Golf Club is approximately two and a half miles away. Richmond's attractions include drama, music and comedy at the Georgian Theatre Royal, and The Station Arts Complex, where the old railway building has been transformed into a creative hub with a three-screen cinema, café bar and galleries with changing exhibitions. There are also opportunities for walking and cycling around the superb parks and natural surroundings, including rambling through nearby Colburn Beck Wood or along the River Swale, or exploring the vast Yorkshire Dales National Park.

Colburn Community Primary School and a day nursery, Banana Moon, are both just fifteen minutes' walk from Poppy Gardens, and Risedale School in Hipswell, the high school that serves Brough with St Giles, is less than two miles away. Colburn Medical Practice, located across the road from the Broadway shops, is a full time GP practice with full nursing support, and there is a dental surgery, Alpha Dental, a mile and a half away on the eastern edge of Catterick Garrison.

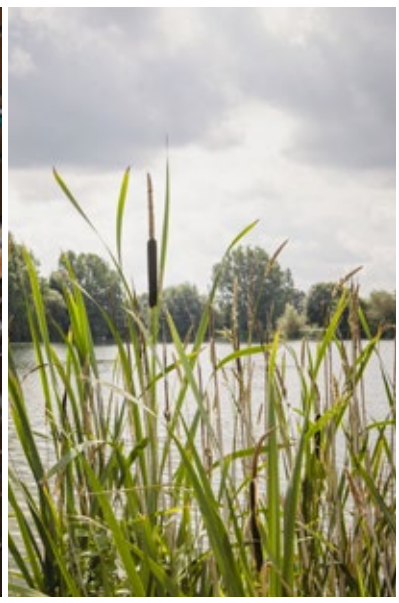


When you leave the car at home and explore the local area by foot or bicycle, you get to know it so much better. And by using local shops and services, you'll help to keep the neighbourhood vibrant and prosperous. Every place has its own personality, and once you move in you'll soon find your favourite walks, and the shops you like best. As a starting point this map shows some of the most useful features and services within a short stroll or bike ride.



- 1 Colburn Pharmacy
19-20 Broadway
01748 832 277
- 2 Walkerville Post Office
11-12 The Broadway
01748 835 748
- 3 Catterick Leisure Centre
Gough Road
01748 831 030
- 4 Catterick Golf Club
Leyburn Road
01748 833 268
- 5 Catterick Racecourse
Catterick Bridge
01748 811 478
- 6 The Station Arts Complex
Station Yard
01748 828 259
- 7 Colburn Community
Primary School
Colburn Lane
01748 832 676
- 8 Risedale School
Hipswell
01748 833 501
- 9 Colburn Medical Practice
Easton Way
01748 830 500
- 10 Alpha Dental Catterick
16b Hildyard Row
01748 832 802

* Times stated are averages based on approximate distances and would be dependent on the route taken.
Based on:
1.0km = 10 to 14 mins walk
2.0km = 5 to 8 mins cycle
3.0km = 7 to 12 mins cycle
4.0km = 10 to 16 mins cycle
5.0km = 14 to 20 mins cycle



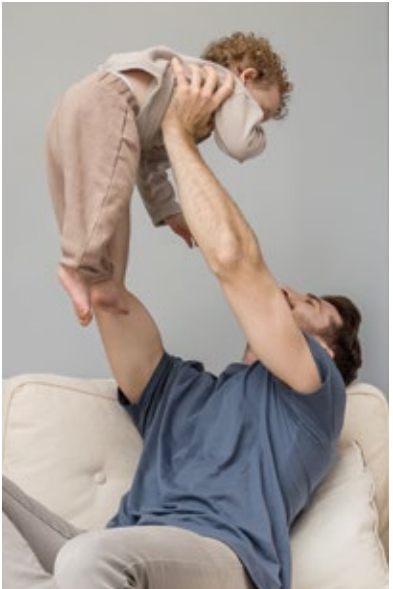
How to find us

Please see millerhomes.co.uk for development opening times or call 01748 220 083

From the A1(M)
Leave the A1(M) at junction 52 to join the A6055 for Catterick Garrison. Three quarters of a mile on, the entrance to Poppy Gardens is on the right.

From Richmond
Leave Richmond by the A6136. After crossing the River Swale, stay on the A6136 Richmond Road for two and a half miles, passing through one roundabout, then at the next roundabout, beside an Aldi store, take the first exit to stay on the A6036 for Catterick. Carry on for almost two miles, following signs for the A1(M) and taking the second exit at the roundabout beside a Jet petrol station. Around 300 yards on, the entrance to Poppy Gardens is on the left.

Sat Nav
DL9 4XL



Important Notice:
Although every care has been taken to ensure the accuracy of all the information given, the contents do not form part of any contract, or constitute a representation or warranty, and, as such, should be treated as a guide only. Interested parties should check with the Development Sales Manager and confirm all details with their solicitor. The developer reserves the right to amend the specification, as necessary, without prior notice, but to an equal or higher standard. Please note that items specified in literature and showhomes may depict appliances, fittings and decorative finishes that do not form part of the standard specification. The project is a new development which is currently under construction. Measurements provided have not been surveyed on-site. The measurements have been taken from architect's plans, and, as such, may be subject to variation during the course of construction. Not all the units described have been completed at the time of going to print and measurements and dimensions should be checked with the Development Sales Manager and confirmed with solicitors. The location of affordable housing is indicative and the tenure of homes may be subject to change.



Registered Developer

90 years of miller homes

Why Miller Homes?

We've been building homes since 1934, that's three generations of experience. We've learned a lot about people and that's made a big difference to what we do and how we do it.

We're enormously proud of the homes we build, combining traditional craftsmanship with new ideas like low carbon technologies. The big difference is that we don't stop caring once we've finished the building, or when we've sold the house, or even once you've moved in. We're there when you need us, until you're settled, satisfied and inviting your friends round.



5 stars for customer satisfaction

Development

Opening Times

Please see millerhomes.co.uk for development opening times or call 01748 220 083

Sat Nav: DL9 4XL

millerhomes.co.uk

millerhomes

the place to be®