



THE LAWRENCE

3 bedroom detached home
Plot 33

ST ANNE'S MEADOWS

WOKINGHAM | BERKSHIRE

 ANTLER HOMES

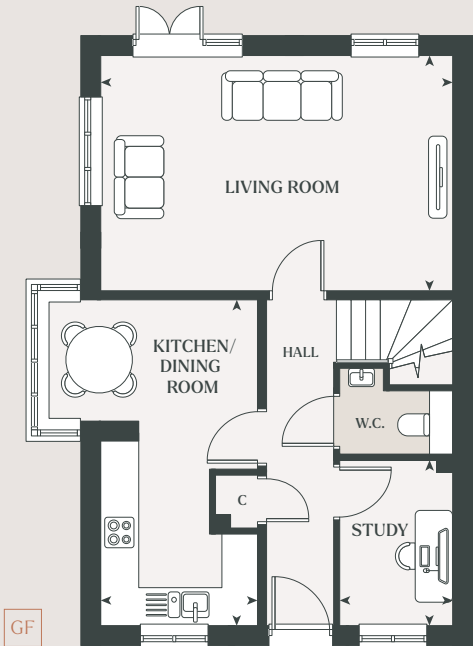
antlerhomes.co.uk

Clever design and attention to detail combine to make The Lawrence a highly desirable family home. The kitchen/dining room has a bay window at the side, bringing in plenty of natural light, while the garden is accessible from the dual aspect living room via a set of French doors.

					
BEDROOMS	BATHROOMS	GARAGE	AREA	AREA	PEA
3	2	+2 SPACES	1,165 SQFT	108.24 SQM	B

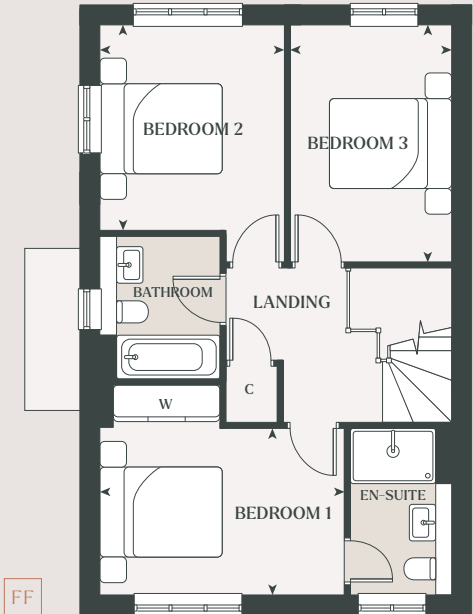
Ground Floor

Kitchen/Dining Room	
5.32m x 2.52m	17'5" x 8'3"
Living Room	
5.71m x 3.80m	18'7" x 12'5"
Study	
2.70m x 1.81m	8'10" x 5'11"



First Floor

Bedroom 1	
3.98m x 2.67m	13'1" x 8'9"
Bedroom 2	
3.33m x 3.01m	10'11" x 9'11"
Bedroom 3	
3.80m x 2.61m	12'5" x 8'7"



C – Cupboard W – Wardrobe

Details may vary from plot to plot. Dimensions are approximate and should not be used for furniture space, appliance space or carpet sizes. Please ask for details of your chosen plot. The contents of this document do not form or constitute a warranty or represent part of any contract. Please note: to increase legibility these plans have been sized to fit the page. As a result each plan may be a different scale to others within this document. CGIs are for indicative purposes only and can be subject to change. 5674251/August 2025.