

THE LONGLEAT

PLOTS 5 & 8



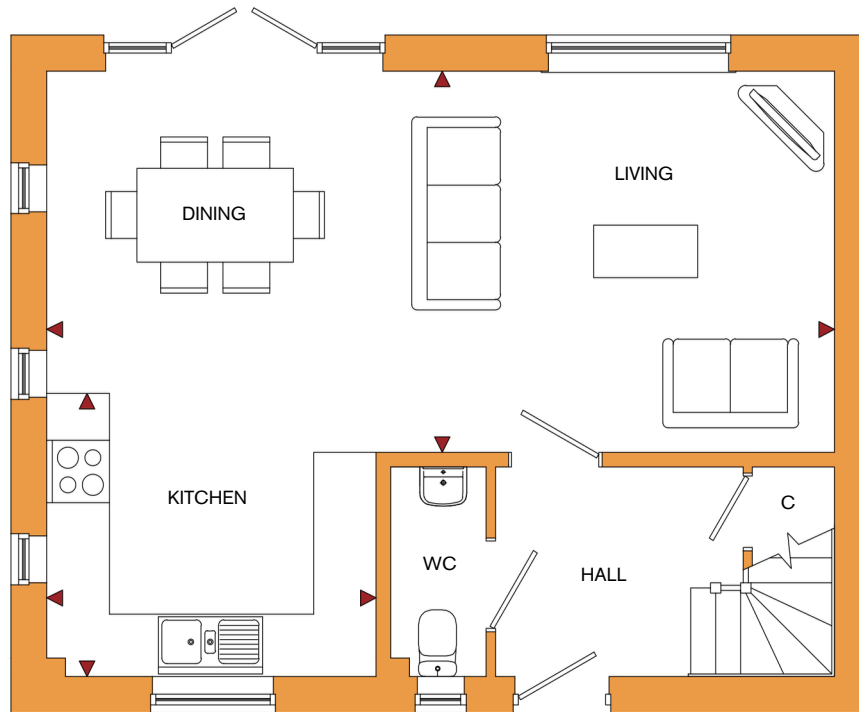
- 3 Bedrooms
- Open Plan Kitchen / Dining / Living
- Choice of Wall & Floor Tiles to Kitchen, Bathroom & En-Suite
- Family Bathroom & Downstairs W/C
- En-suite to Bedroom 1
- Off-Road Parking
- Energy Efficient Materials Throughout



THE LONGLEAT

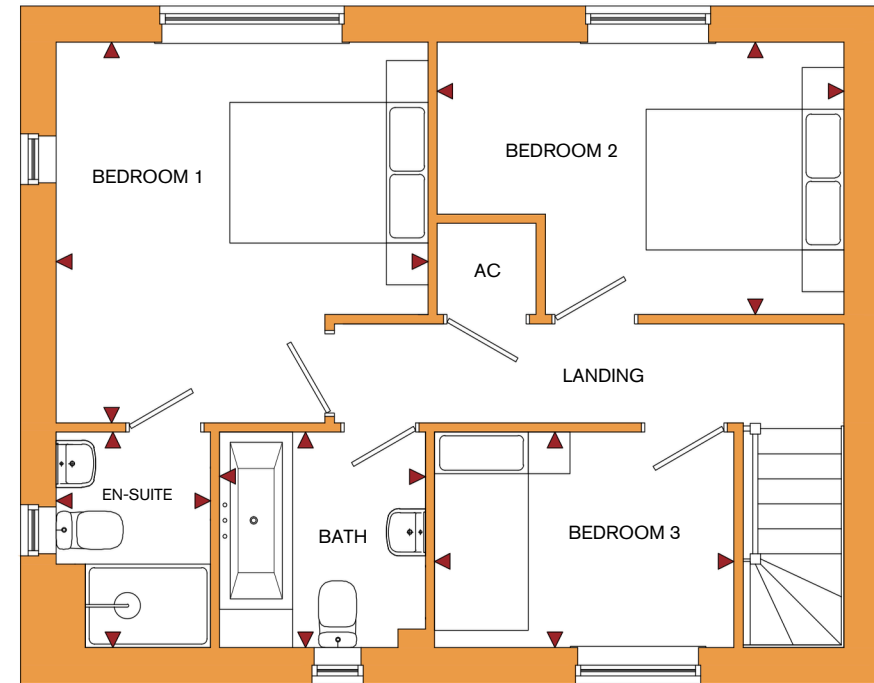
FLOOR PLANS

ROOM	IMPERIAL / "	METRIC / mm
Living / Dining	24' 10" x 12' 0"	7560 x 3660mm
Kitchen	10' 5" x 8' 11"	3160 x 2719mm



GROUND FLOOR

ROOM	IMPERIAL / "	METRIC / mm
Bedroom 1	11' 9" x 12' 0"	3568 x 3654mm
Bedroom 2	12' 10" x 8' 7"	3905 x 2617mm
Bedroom 3	9' 5" x 6' 10"	2873 x 2067mm
Bathroom	6' 6" x 6' 10"	1975 x 2067mm
En-Suite	4' 10" x 6' 10"	1480 x 2067mm



FIRST FLOOR

TOTAL FLOOR AREA
946ft² / 87.8m²