



The Ledbury 3

Three Bedroom Home

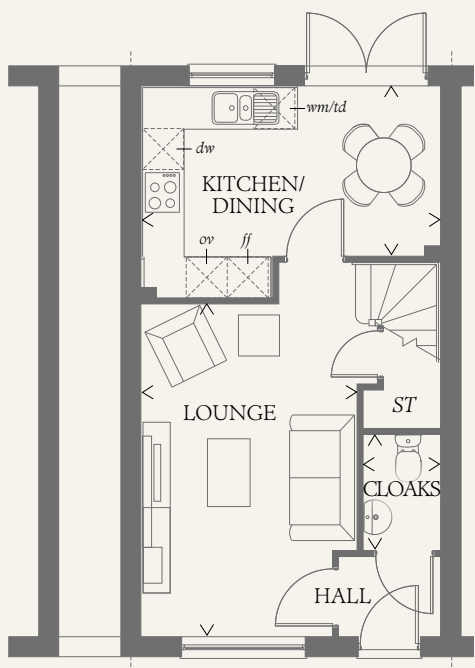




The Ledbury 3

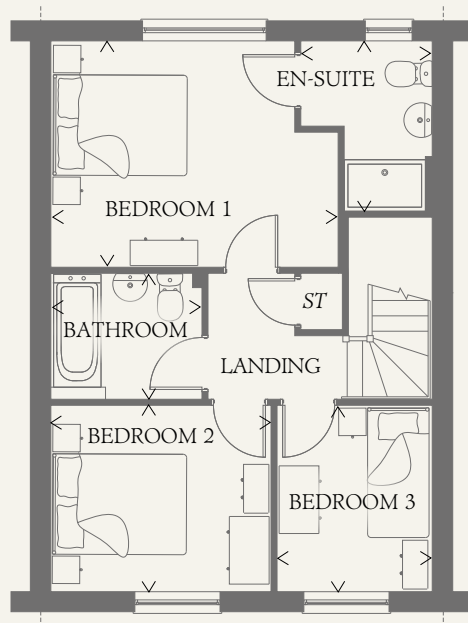
Three Bedroom Home

Simple, yet stylish, compact yet also undeniably chic, these superb homes offer the perfect combination of quality and value, space and savings, all created with the same high levels of craftsmanship that set all Redrow homes apart.



GROUND FLOOR

LOUNGE	15'11" x 10'4"	4.85 x 3.14 m
KITCHEN/ DINING	14'3" x 8'1"	4.34 x 2.47 m
CLOAKS	5'7" x 3'8"	1.70 x 1.11 m



FIRST FLOOR

BEDROOM 1	13'9" x 10'10"	4.18 x 3.29 m
EN-SUITE	8'1" x 6'3"	2.47 x 1.90 m
BEDROOM 2	10'6" x 8'11"	3.20 x 2.71 m
BEDROOM 3	8'11" x 7'5"	2.71 x 2.25 m
BATHROOM	7'2" x 6'1"	2.19 x 1.85 m

**CONSUMER
CODE FOR
HOME BUILDERS**

www.consumercode.co.uk

Customers should note this illustration is an example of the Ledbury3 house type. All dimensions indicated are approximate and the furniture layout is for illustrative purposes only. Homes may be 'handed' (mirror image) versions of the illustrations, and may be detached, semi-detached or terraced. Materials used may differ from plot to plot including render and roof tile colours. Detailed plans and specifications are available for inspection for each plot at our Sales Centre during working hours and customers must check their individual specifications prior to making a reservation.

KEY

- Hob
- Oven
- Fridge/freezer
- Washing machine space
- Dishwasher space
- Tumble dryer space
- Cupboard

< Denotes where dimensions are taken from. All wardrobes are subject to site specification. Please see Sales Consultant for further details.

THINK 209938. EF_LED3_MM.4 RV

