



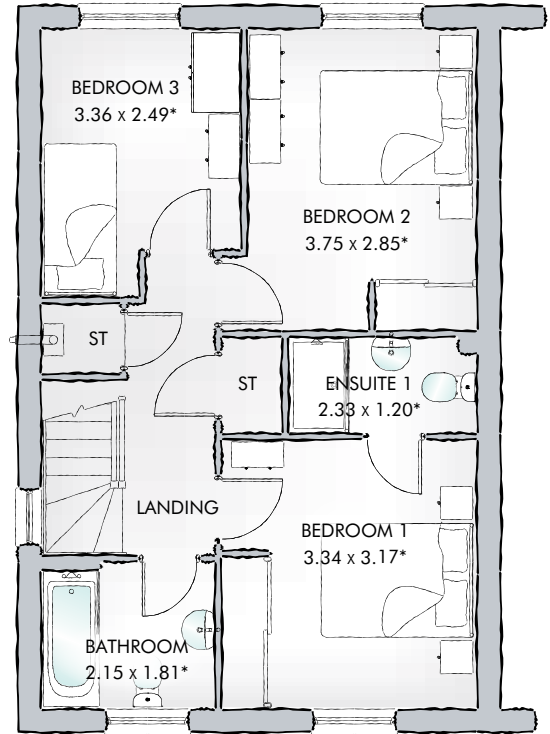
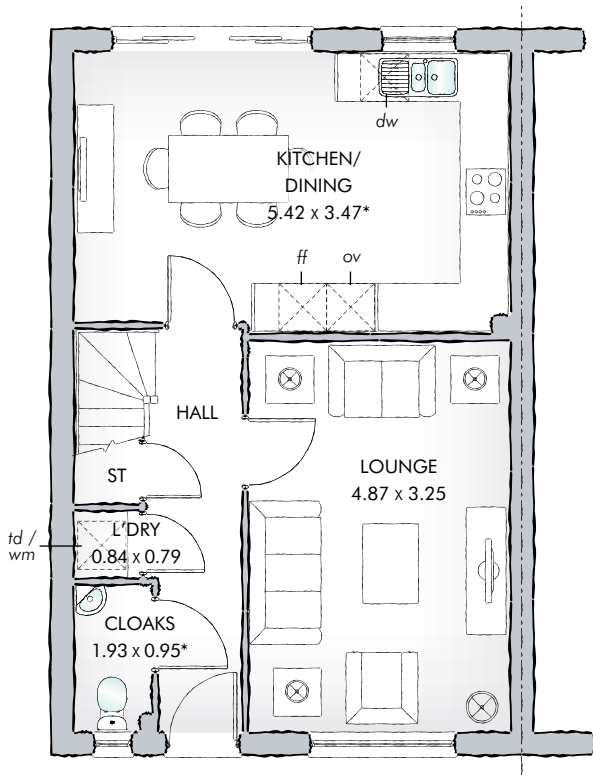
HANOVER

THREE BEDROOM HOME



 REDROW

HANOVER



1001 SQ FT | THREE BEDROOM HOME

The Hanover makes the most of a wider first floor to create a third bedroom above the generous kitchen/dining area and private lounge, creating a stylish family home that has lots of space for everyone.

GROUND FLOOR

Lounge	16'0" x 11'5"	4.87 x 3.47 m*
Kitchen/ Dining	17'9" x 10'8"	5.42 x 3.25 m
Cloaks	6'4" x 3'1"	1.93 x 0.95 m*
Laundry	2'9" x 2'7"	0.84 x 0.79 m

FIRST FLOOR

Bedroom 1	10'11" x 10'5"	3.34 x 3.17 m*
En-suite	7'8" x 3'11"	2.33 x 1.20 m*
Bedroom 2	12'4" x 9'4"	3.75 x 2.85 m*
Bedroom 3	11'0" x 8'2"	3.36 x 2.49 m*
Bathroom	7'1" x 5'11"	2.15 x 1.81 m*

Customers should note this illustration is an example of The Hanover house type. All dimensions indicated are approximate and the furniture layout is for illustrative purposes only. Homes may be 'handed' (mirror image) versions of the illustrations, and may be detached, semi-detached or terraced. Materials used may differ from plot to plot including render and roof tile colours. Detailed plans and specifications are available for inspection for each plot at our Sales Centre during working hours and customers must check their individual specifications prior to making a reservation.

KEY Hob Oven Fridge/freezer Wm Washing machine space
 dw Dishwasher td Tumble dryer space *Max dimensions
 Note: Bedroom dimensions taken into wardrobe recess. All wardrobes are subject to site specification. Please see Sales Consultant for further details.

Redrow.co.uk give notice that the property particulars and related information on this site, whilst believed to be accurate, are set as a general outline for guidance only. Intending purchasers should not rely on them as statements or representations of fact, but must satisfy themselves before physical inspection as to their availability, or by physical inspection of the property in question or otherwise as to their accuracy or fit for purpose. Consequently, no information displayed on this site (or linked sites) constitutes or forms part of a contract. Materials used may differ from plot to plot including render and roof tile colours.

Traditional homes, built the way you remember

